

# **Bush Fire Survival Plan for YOUR BUSINESS NAME**

## **HERE**

Kangaroo Valley Police Station: Tel 4465 1144

Emergency Services: 000

Rural Fire Service: Call 1800 679 737

YOUR Mobile Phone:

YOUR location: corner of ..... (HAVE YOU HAD THE RFS VISIT TO LEARN ABOUT THE PROPERTY?)

### **Care for our Visitors**

It is our responsibility to care for our guests. We are at risk from bush fires because: trees on property, surrounded by bushland, need to travel out of the valley through forest.

### **Advice for our Guests**

#### **If you are travelling in the area and....**

##### **...in a vehicle caught in a bushfire**

- stop and park
- don't drive through thick smoke
- park in a cleared area off the main track/road and keep the motor running
- put on headlights and hazard lights if you have them
- wind up the windows and close air vents
- get down on the floor
- cover yourself with a rug if one is available, or cover as much exposed skin as possible with clothing. Natural fibres are best.
- stay in the vehicle
- when the fire front has safely passed, and only if visibility has cleared, check under the vehicle for remaining fires and move away from the fire front.

Remember to stay as visible as possible as thick smoke seriously limits visibility and the last thing anyone wants to happen is to survive the passage of the fire front but collide afterwards with another vehicle.

##### **...on foot and caught in a bushfire**

- do not run or panic
- do not go uphill or attempt to pass through the flaming front - it may be deeper than you think and with reduced visibility immediately behind the flames
- work your way cross-slope onto an area of low fuel (cleared is best) or into a dam or creek bed
- shelter behind something solid as low as possible, covering as much of your exposed skin as possible with natural fibre material. Remain face down while the fire front passes - again this should be only a short period of time.
- when the fire front has passed - assess yourself and anyone with you for injury and if safe, proceed in

## During bush fire season

1. At check in ask all guests which is the best way to reach them in case of a fire, note details on their booking form.
2. All guest must be notified of where the PROPERTY meeting place is located
3. All guests must be notified of the Kangaroo Valley showground meeting place location
4. During hot dry windy weather check all road situations (ABC Illawarra 97.3 FM, RMS, neighbours, relatives outside Kangaroo Valley)
5. KEEP ALERT, during days of hot dry winds keep checking ABC Illawarra on 97.3 FM regularly, talk to neighbours, watch for signs of smoke. Do not rely on a single source of information. EMERGENCY WARNING is the highest form of alert, you need to take action immediately. NOTE embers can travel many kilometres ahead of a fire.
6. If SEVERE Fire Danger Rating tell guests not to leave the property

## Preparing Ourselves

Note: Thick smoke will sting your eyes and choke your lungs. Hot embers will rain down on you. Power and water will be cut. The fire noise as it approaches will deafen you.

Best preparation is to LEAVE EARLY. This of course means alerting our guests (see below).

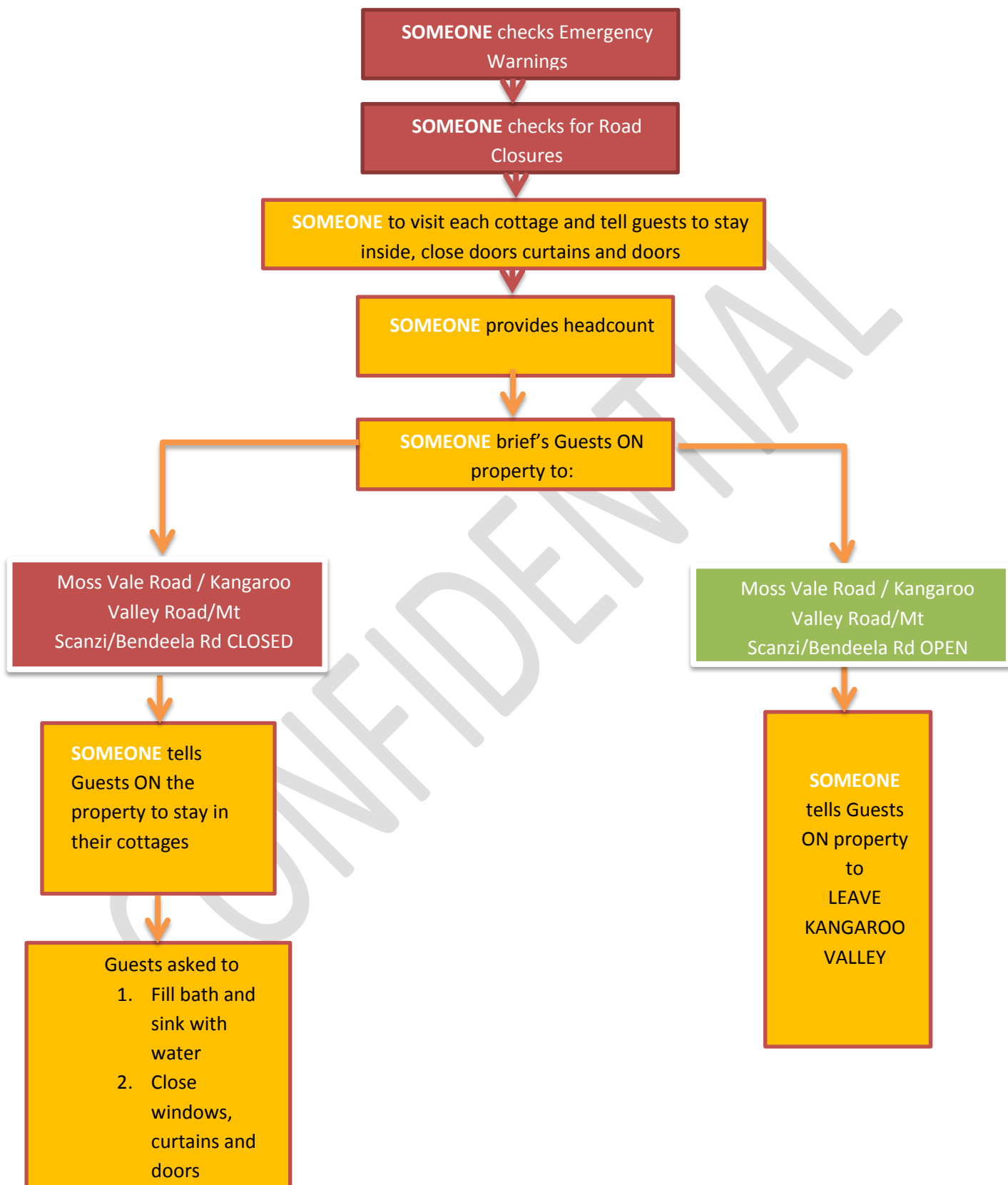
Preparation on hot, dry, windy days:

1. Check water pumps and generators CONSIDER BUYING A PORTABLE PUMP IF YOU DON'T HAVE A GENERATOR
2. Ensure we have sufficient fuel for generators unleaded petrol
3. Check if you require to do any further property maintenance (see Maintenance Plan below)
4. Review Bush Fire Survival Plan
5. Remove computer hard drive and place in safe box
6. Remove important business records folder and put in car
7. Keep in contact with neighbours/members of the KVTA
8. KEEP ALERT

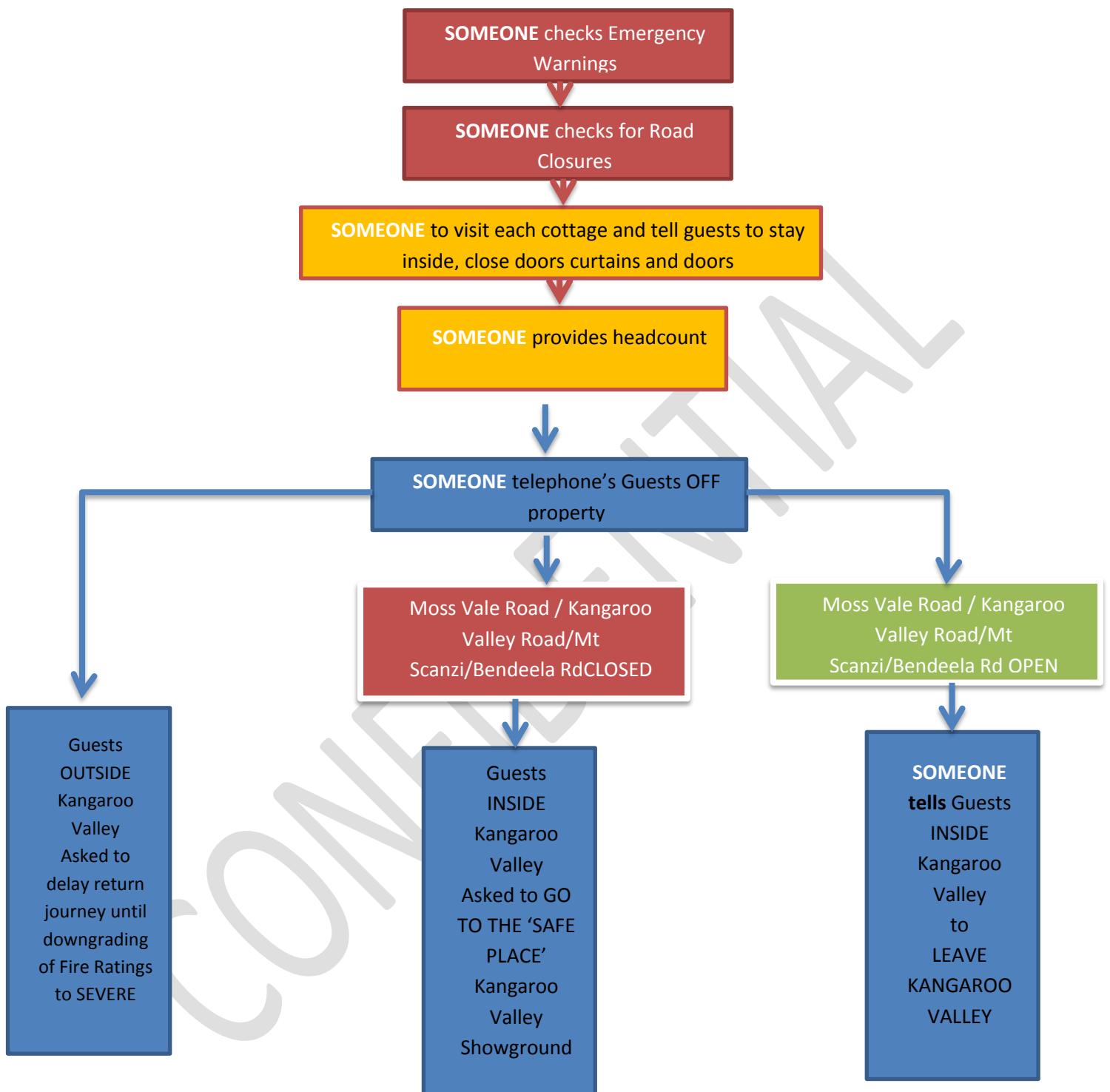
### Communication Plan: If there is a fire that you see

1. Follow your Bush Fire Survival Plan (attached - make changes as required)
2. Call Christopher Warren Tel: 4465 1408 and explain situation
3. Christopher to notify Brenda Sambrook who will notify the membership
4. Christopher to liaise with RFS, Shoalhaven Tourism Board and manage media relations

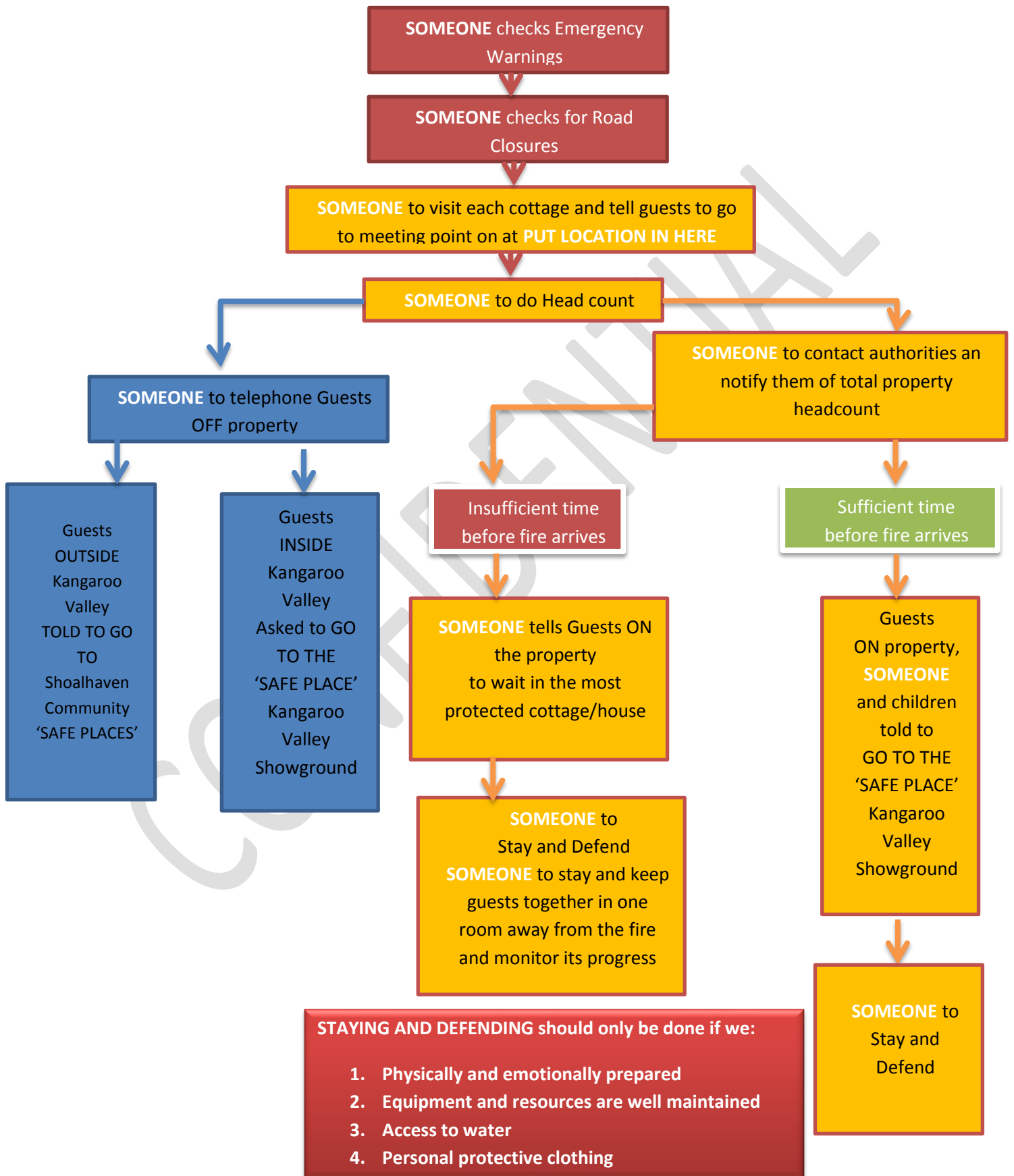
# In the event of an **EXTREME Fire Danger Warning** : Guests On Property



# In the event of an **EXTREME Fire Danger Warning** : Guests Off Property



In the event of a **CATASTROPHIC Fire Danger Warning** :



## Stay and Defend

### Well Before the Bushfire

1. Block down pipes (sock with sand)
2. Fill all gutters with water
3. Move garden furniture and door mats away from cottages/house
4. Gas tank valves should be facing away from the house/cottages – and **SHUT OFF GAS**
5. Check property for embers around cottages/shop/shed
6. Hose down wooden decks
7. Prepare of drinking water and drink plenty of water
8. Keep petrol/diesel/gas tanks secure inside metal shed
9. Close doors and windows, blinds and curtains
10. Fill bath and sinks, use water to fire fight
11. Inside place water buckets around the cottages/shop/sheds and in the ceiling space
12. Place ladder next to loft entrance in each cottage/shop/shed to check for spot fires
13. Wear wide brimmed hat (which can be tied securely) , goggles (to protect from smoke and embers), good gloves, mask for nose and mouth, long sleeved shirt or thick cotton, heavy cotton/denim jeans, work boots
14. Have face cloths handy
15. Set up irrigation sprinkler system on fireside of residence using firefighting pump

### Just before the bushfire

1. Turn on generator
2. Place wet towels around windows and doors to stop smoke entering
3. Wet lawns on the fireward side of the cottages and house using mower and portable pump – use static water supply
4. Bring in hose pipes, mower and trailer with portable pump inside shed when finished
5. Activate firefighting pump and irrigation sprinkler system on fireside of residence
6. When fire arrives stay inside on the side furthest from fire with torches (as it will be dark)
7. Monitor progress
8. Leave the house/cottage/shop/shed when it is 'necessary and safe to do so'

### After the passage of the fire front – it may only take a few minutes

1. After the fire has passed check building to put out any fires and patrol property
2. thoroughly inspect all cottages for embers and damage (close doors after you exit),
  - a. extinguish fires when you find them. Look in the ceiling, at all window sills and doors
  - b. thresholds, under the floor and in all rooms as well as around the cottages
3. Stay with your cottages as long as possible afterwards - fire embers may be a danger to your property for up to 6 hours after the main front has passed, remain alert.
4. Let your relatives know you are safe and re-connect services, allow guests to contact relatives.

## Emergency Survival Kit

Portable battery operated radio  
Water proof torch  
Spare batteries  
Woollen blankets  
Emergency contact numbers  
Waterproof bag for valuables

### ***Now add.....***

Cash, ATM, Credit Cards  
Medications  
Mobile phone and charger  
Combination pocket knife  
Important document  
Change of clothes for everyone  
Drinking water – 3 litres per person  
First aid kit

---

### In the case of structural fires

- **Call 000 BY WHOM**
  - **Guests told to relocate to the ENTER LOCATION HERE Safe Place – BY WHOM**
  - **Head count of guests – BY WHOM**
  - **Missing guests details alerted to the authorities –BY WHOM**
  - **Fight fire – BY WHOM**
  - **Notify neighbours – BY WHOM**
-

## Equipment we require **EXAMPLE**

	Responsibility	Completed by
Emergency Survival Kit including contents		
Ladders		
Spades/shovels		
Mops and bucket		
Drinking water in heat resistant bottles		
Fire resistant box for computer hard drive		
Blower for clearing out gutters		
New fire water pipe from dam to JJ and Fleur		
Fire Hoses long enough to reach every part of the house/cottage/shop/shed		
Check the dam pump		
Buy a mobile petrol pump		
Install warning systems that automatically alert the authorities		
Sprinkler system for lawns		

## Maintenance Plan **EXAMPLE**

	Responsibility	Completed by
Clean leaves from gutters		
Cut any overhanging branches and cut back shrubs		
Keep static water supply at the ready		
Keep grass low		
Organise safe areas for the storage of flammable materials, woodpiles away from the cottages, shed and solar panels		
Clear undergrowth from fences		
Check all your hoses are in good order and can reach fully around house/cottages/shop/shed, with the required overlap		

## Training

All staff and family to read survival plan and practice with equipment **October** and **January** every year.

Full time staff and family		
Part time staff		



## Community Safe Places

If you are not able to Leave Early before the fire has arrived, and you are not going to Stay and Defend go to:

1. The official Safe Place in Kangaroo Valley is the showground, go directly by road.
2. If the road is not passable go to the Evacuation Point at YOUR PROPERTY. In an emergency **guests** and **family** should wait here,
3. If you are in Nowra or towns on South Coast, wait in shopping mall away from fire or go to one of the Safe Places in the Shoalhaven [http://www.rfs.nsw.gov.au/dsp\\_content.cfm?cat\\_id=1825#Shoalhaven](http://www.rfs.nsw.gov.au/dsp_content.cfm?cat_id=1825#Shoalhaven)
4. Check by calling **1800 679 737**
5. Take water and food to the Safe Place

**Choose more than one place so you have a backup if the original safe place is not available**

Prepared by: Christopher Warren, Tel: 4465 1408

## References

This plan is a summary of the key facts from Crystal Creek Meadows Bushfire Emergency Plan and the RFS's Bush Fire Survival Plan

Look at this link

[http://www.rfs.nsw.gov.au/file\\_system/attachments/Attachment\\_BushFireSurvivalPlan.pdf](http://www.rfs.nsw.gov.au/file_system/attachments/Attachment_BushFireSurvivalPlan.pdf)