



GUIDE NO.3

parks and facilities

Wagga Wagga City Council has a wide variety of parks, gardens and facilities that can be booked for your event.

Bookings for 'City Signage Sites' can also be made through Council. City signage sites include:

- Eastern Gateway (Railway overpass, corner Tarcutta Street and Edward Street)
- Western Gateway (Roundabout at the corner of Edward Street and the Olympic Highway)
- Wollundry Banner (Banner over Wollundry Bridge Lagoon in Fitzmaurice Street)
- Northern Gateway (Bomen Road)

Bookings for parks, gardens and facilities and signage sites can be made by phoning 1300 2 WAGGA (1300 2 92442) or email bookings@wagga.nsw.gov.au

SITE MAPS

Included with this guide are site maps of six of Council's most utilised venues with power locations are:

1. Robertson Oval - page 10
2. Victory Memorial Gardens - page 11
3. Wagga Wagga Exhibition Centre - page 12
4. Bolton Park - page 13
5. Wollundry Lagoon Precinct Area - page 14
6. Botanic Gardens - page 15

WASTE

Wagga Wagga City Council is committed to waste management practices that ensure environmental sustainability of our local area and the wider community.

Event organisers are encouraged to adopt 'Waste Wise' principles in their planning and help to lead the way towards a cleaner environment for the whole community.

If your event is being held at a Council venue, please contact Parks and Recreation on 1300 2 WAGGA (1300 2 92442) to discuss waste requirements such as garbage and recycling bins.

For further information on waste and recycling businesses please consult the Yellow Pages.

GREGADOO WASTE MANAGEMENT CENTRE

Address: 132 Ashfords Road, Wagga Wagga.

Opening Hours: 7:00am – 4:30pm, 361 days per year, 7 days a week.

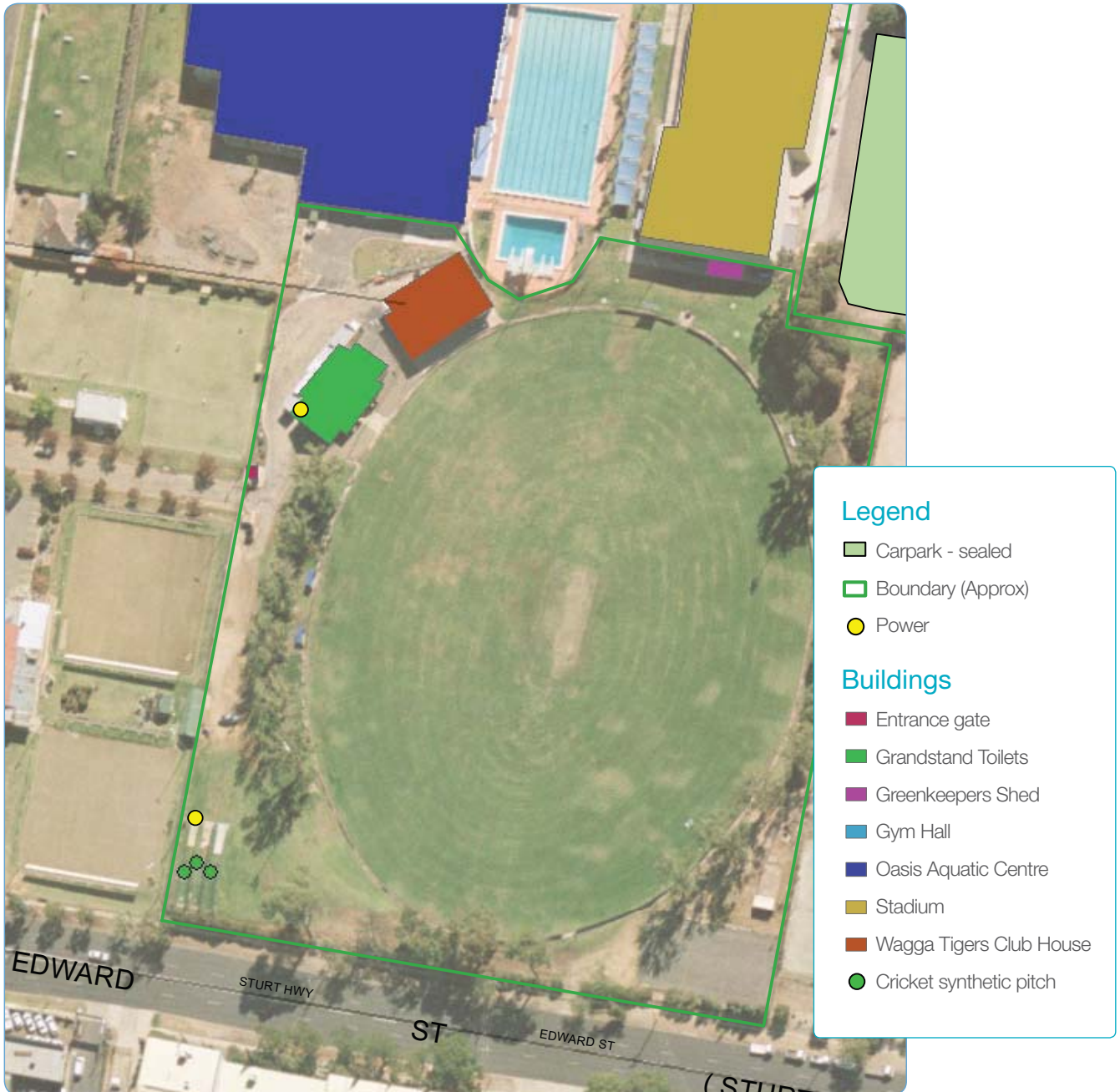
The centre is closed on Christmas Day, Boxing Day, New Years Day and Good Friday.

Guide No.3

Parks and Facilities

Robertson Oval

Site Area = 3 hectares



Guide No.3 Parks and Facilities

Victory Memorial Gardens

Site Area = 3.4 hectares



Legend

Boundary (Approx)

Power

Buildings

Cenotaph

Maintenance Depot

Outdoor Stage

War Memorial

Guide No.3

Parks and Facilities

Wagga Wagga Exhibition Centre EQUEX

Site Area = 29.6 hectares



Legend

● Power

Ground Cover

■ Carpark - gravel

■ Carpark - sealed

□ Site Boundary

Buildings

■ Amenities block

■ Netball amenities block

■ Office Country Rugby League

■ Scorers box

■ Sports Club House

■ Storage shed

Guide No.3

Parks and Facilities

Bolton Park

Site Area = 9.5 hectares



Legend

- Carpark - sealed
- Boundary (Approx)
- Power

Buildings

- BBQ Area
- Skatepark
- Stadium
- Tennis Centre
- Tennis Store room
- Toilets
- Cricket synthetic pitch

Guide No.3

Parks and Facilities

Wollundry Lagoon Precinct Area

Site Area = 2.9 hectares



Guide No.3

Parks and Facilities

Wagga Wagga Botanic Gardens

Site Area = 20.7 hectares

